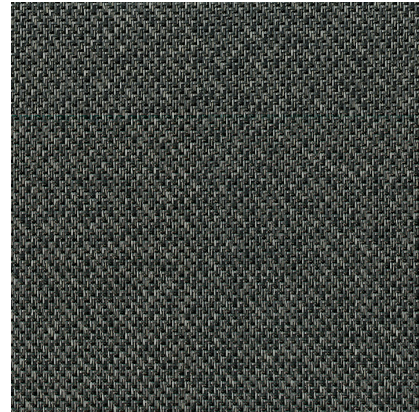


Model: LINKFLOOR ROLL CONTRACT STEEL



Codes: 100306246

Group: G-232


Format: 200X1000CM



## COMPOSITION

	Size	Material	Type of material
 Layer 1	0.7	Braided vinyl	Vinyl fabric made up of a polyester core encapsulated in a vinyl solid
 Layer 2	1.8	Vinyl substrate	PVC vinyl substrate with polyester and fiberglass interior

## FEATURES

-  Weaved material.
-  Water and moisture resistant flooring, suitable for wet areas such as bathrooms and kitchens for residential use, provided the product's installation instructions are followed.
-  5 year warranty for commercial use valid for vinyl materials that have been installed in rooms where they are exposed to normal wear and tear for their recommended End Use Category in accordance with ISO 10582.
-  Is suitable for installing on water radiant heating
-  There are consistent color changes between pieces.
-  It is necessary to apply adhesive for installing it.
-  15 year home use warranty valid for vinyl materials that have been installed in rooms where they are exposed to normal wear and tear for their recommended End Use category in accordance with ISO 10582.
-  Roll format
-  Floor capable of dissipating excess electrical charges and distribute them over its entire surface

## DIMENSIONAL FEATURES

Length of face	No menor que el valor nominal MM	EN 426*
Item thickness	±0.15 mm	EN 428*
Width of face	No menor que el valor nominal MM	EN 426*



## LABORATORY TESTS

Commercial area class	33	EN 10582*
Slip resistance (r)	R-10	DIN 51130*
Abrasion resistance	0.068 mm/1.80 mm <sup>3</sup>	EN 660-1,2*
Resistance to staining	Clase 0	EN 423*
Furniture leg effect	No damage	EN 424*
Castor chair effect	No damage %	
Dimensional stability	0.05%	EN 434:1994*
Formaldehyde emissions	E1	EN 717*
Slip resistance (pendulum-wet)	CL 2 (41)	EN 41901*
Fire resistance	Bfl-s1	EN 13501*
Evaluation of propensity to accumulation of electrostatic charges	≤2 kV	EN 1815*
Heat resistance	R=0.0639 m <sup>2</sup> K/W	EN 12664*
Fungus test	Grado 1	ASTM G21:96*
Uv light fastness	>Grado 6	ISO 105*
Asymmetry/arch effect	≤2%	EN 427*
Residual footprint	0.08 mm	EN 433:1994*
Curvature	1.5 mm	EN 434:1994*
Acoustic insulation	Lw=12 dB	EN ISO 717-2*
Dynamic coefficient of friction	0.51	ANSI A137.1*
Private area class	23	EN 10582*
Slip resistance (pendulum-dry)	CL 3 (98)	UNE 41902*

## PACKING

Sales units per box	20 M2/BOX	
Sales units per pallet	240 M2/PAL	
Sales units per unit	20 M2/PIECE	
Sale unit	M2	
Base unit	ST	
Sales units per square meter	1 M2	
Net weight	3.74095 KG/M2	
Gross weight	3.8925 KG/M2	

## SPECIAL PIECES

SAP	Description	Group	Boxes	Pallet	Units	SKU	Basic Unit	Net Weight	Gross weight
100174756	ESP. PERF ADH LINKFLOOR ALUMINIO 3,5X270	G-121	10 PIECES/BOX	1000 PIECES/PAL	10.58 PIECES/M2	-	-	0.37 KG/PIECES	0.39 KG/PIECES
100258737	PERFIL ADH LINKFLOOR NEGRO 3,5X270	G-121	40 PIECES/BOX	1000 PIECES/PAL	10.58 PIECES/M2	-	-	0.37 KG/PIECES	0.39 KG/PIECES
100222747	TERM. PELD. ESC.NEGRO LINKFLOOR ROLL 200	G-135	10 PIECES/BOX	1000 PIECES/PAL	1 PIECES/M2	-	-	0.5 KG/PIECES	0.52 KG/PIECES
100222706	TERM. PELD. ESC.PLATA LINKFLOOR ROLL 200	G-126	10 PIECES/BOX	1000 PIECES/PAL	1 PIECES/M2	-	-	0.5 KG/PIECES	0.52 KG/PIECES
100128267	ZOCALO ALUMINIO 8X225	G-121	12 PIECES/BOX	696 PIECES/PAL	5.56 PIECES/M2	-	-	1.57 KG/PIECES	1.62 KG/PIECES

